



### **Development standards for lighting**

The LOC lighting policy is intended to protect our sensitive lake ecosystem and preserve nighttime views while allowing residents to safely light their waterfront living area. Uncontrolled light can detract from the natural beauty of the lakeside environment and impair visibility for lake users.

All new structural and landscape lighting on Lake Oswego Corporation property must be approved by the LOC development committee. Lighting should be designed to minimize light pollution and glare by utilizing fully shielded fixtures and directing light downward toward the structure not toward the lake. Low lumen and warm temperature should be chosen to reduce output. Timer and motion sensor controls should be utilized to reduce duration and unused lighting.

### **Lighting plan guidelines**

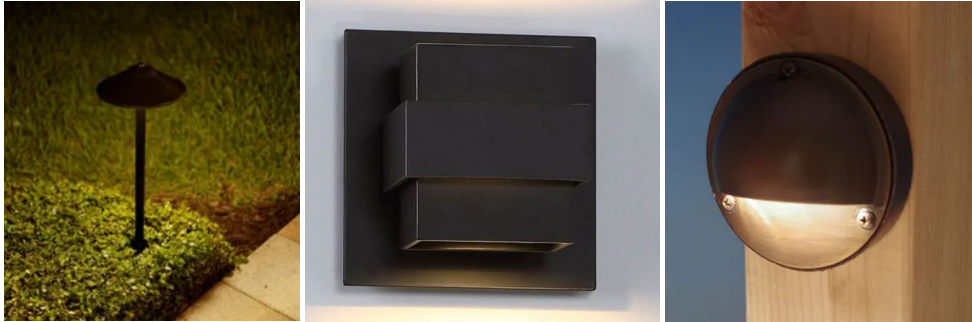
An applicant's plan shall describe measures to shield any lighting on proposed Facilities to protect the privacy of adjacent properties, water surfaces abutting the applicant's property, reflections on the Lake, and fogging the night sky. Sensible lighting does not include exposed floodlights or lamps with shaded tops, for example. Landscape lighting should be as low to the ground as possible and of appropriate wattage.

An appropriate lighting plan will show the location and type of fixtures as well as describe their controls. Fixtures submittals should be included for all exterior lights.

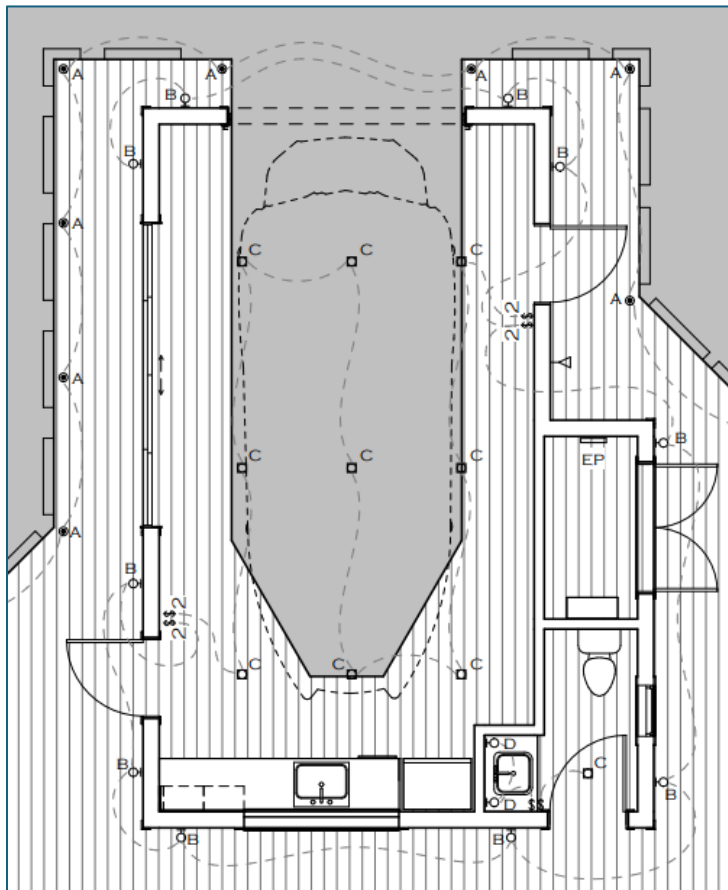
### **Unacceptable Fixture Types**



## Acceptable fixture types



## Example Lighting plan



### All new lighting plans should include:

1. A visual representation of the location of proposed lighting.
2. A submittal of all proposed fixtures on Lake Oswego Corporation property.
3. A description of the controls for lighting.